



**INVESTING IN ALASKA**





**WE'VE GROWN UP WITH ALASKA**



## BOB WALP: VISIONARY



# GROWING WITH ALASKA

- Largest and most diverse network in Alaska
- Connecting more than 240 communities
- \$3 Billion invested right here in the state





## MEETING TECHNOLOGY & TELECOM NEEDS





# SERVING ALASKA'S BUSINESSES



- Small business, commercial, non-profit, government customers
- Wholesale and roaming
- Engineering solutions
- Managed services

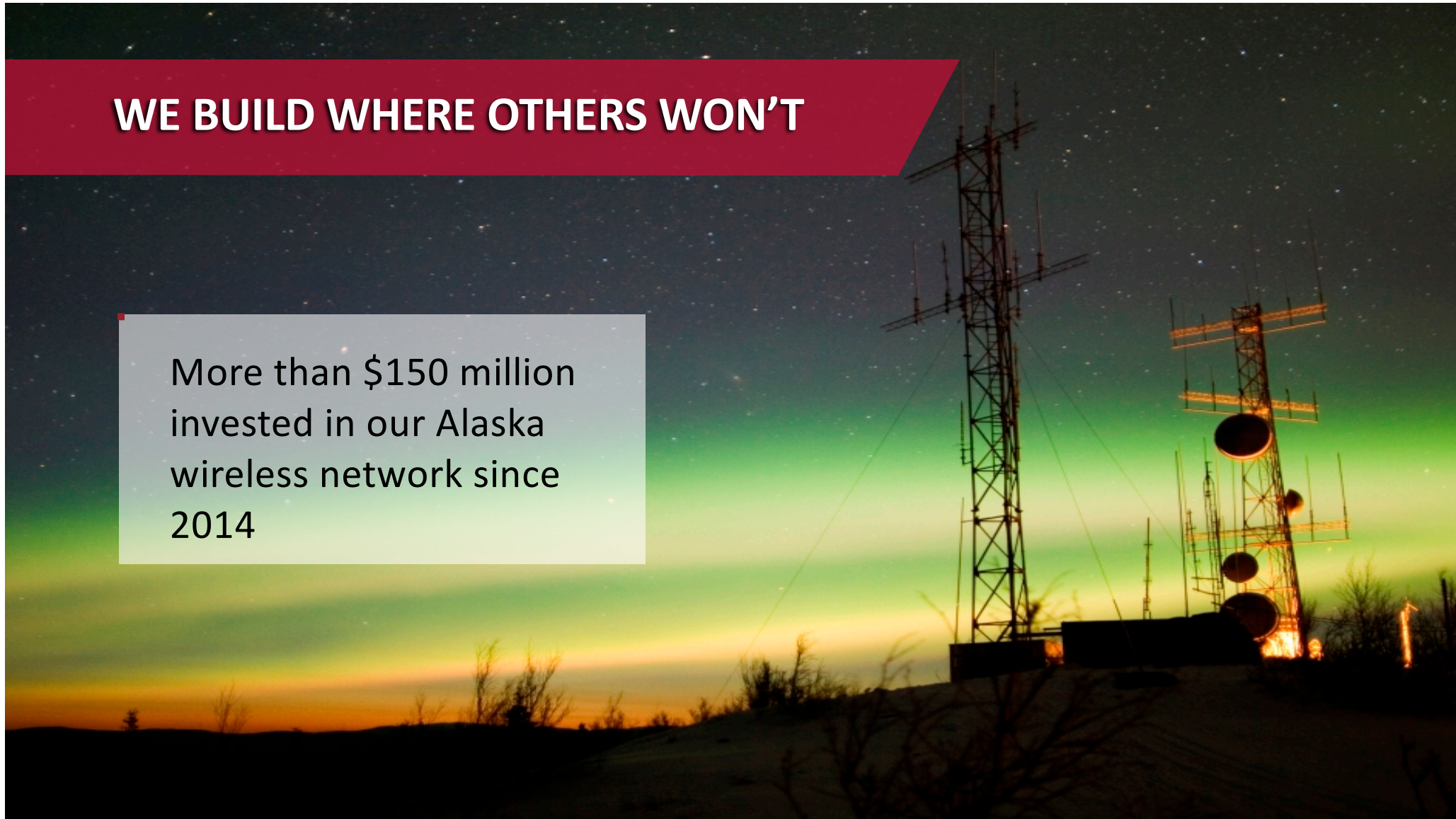
# ALASKA'S LARGEST WIRELESS NETWORK





# WE BUILD WHERE OTHERS WON'T

More than \$150 million  
invested in our Alaska  
wireless network since  
2014







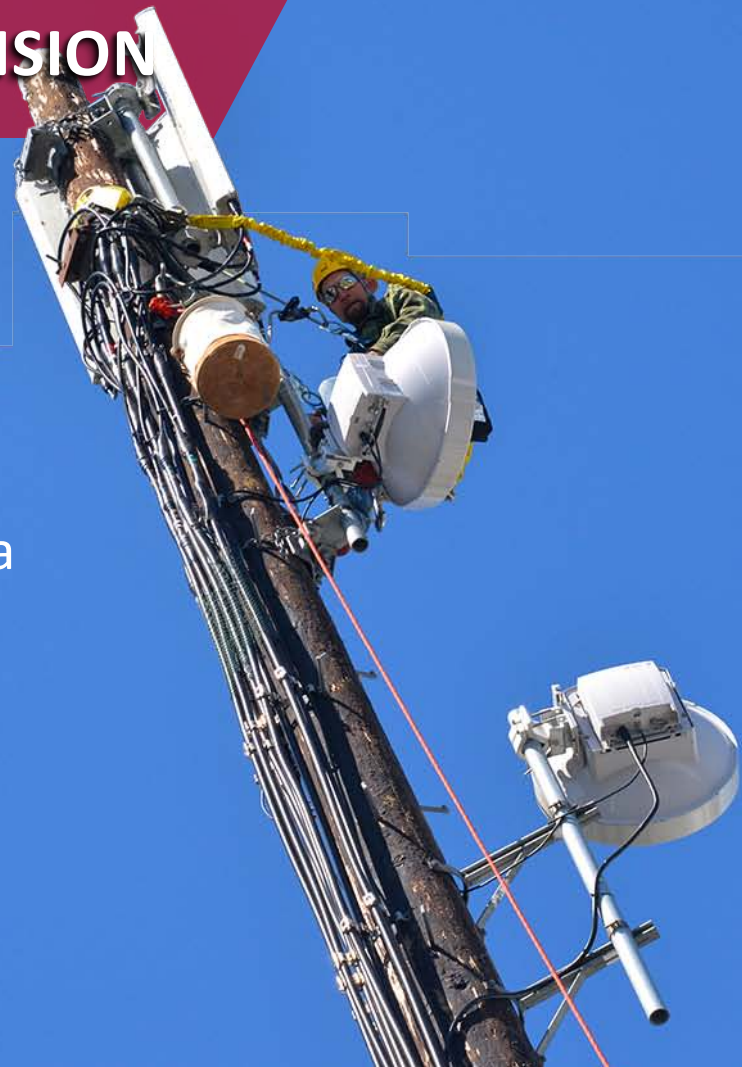
**Coldfoot, AK**



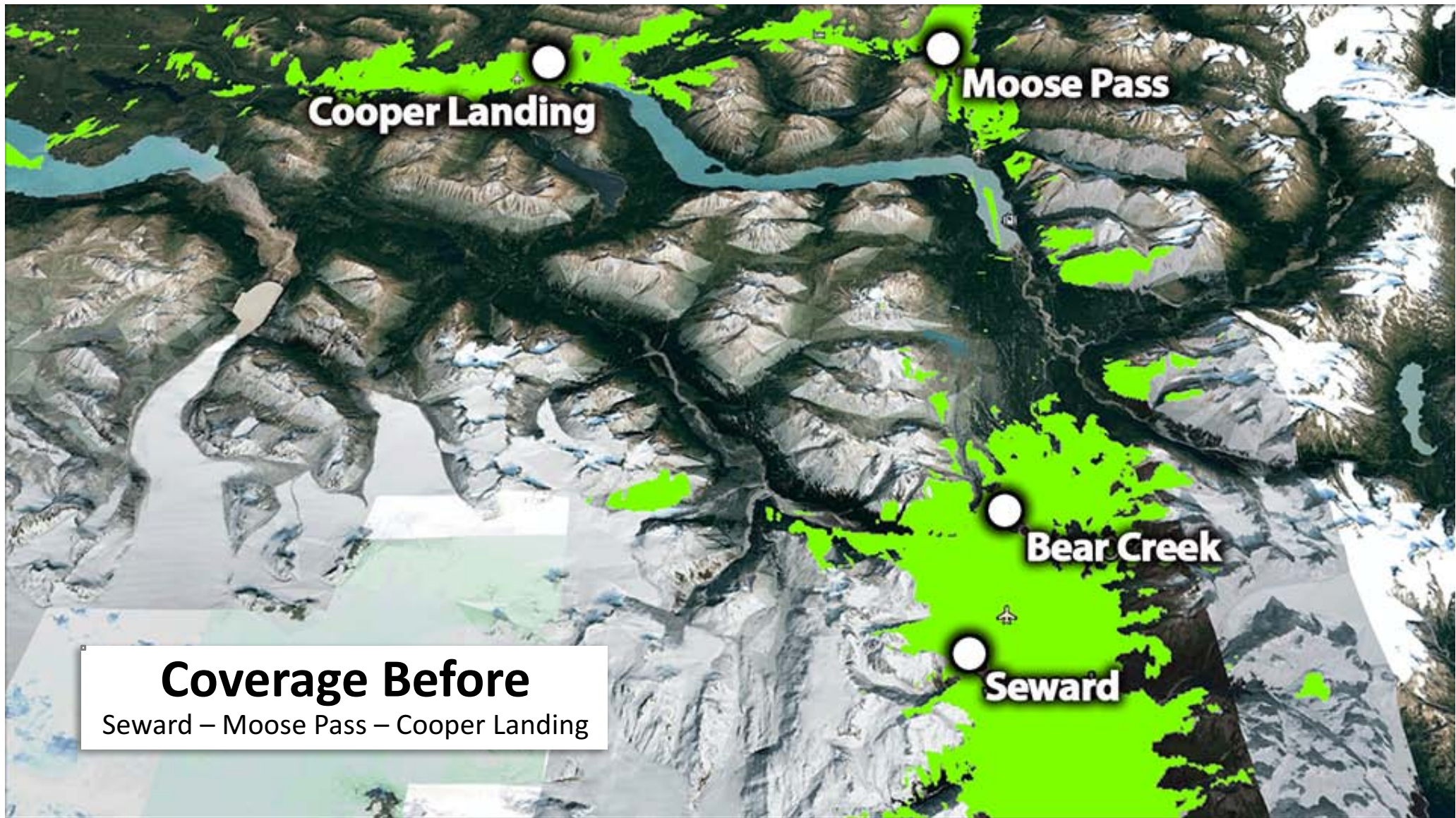


# KENAI PENINSULA WIRELESS EXPANSION

- Upgrading 39 existing sites
- Creates bigger voice coverage area
- Better reception in buildings
- Provides better level of safety in Alaska's most popular recreation area



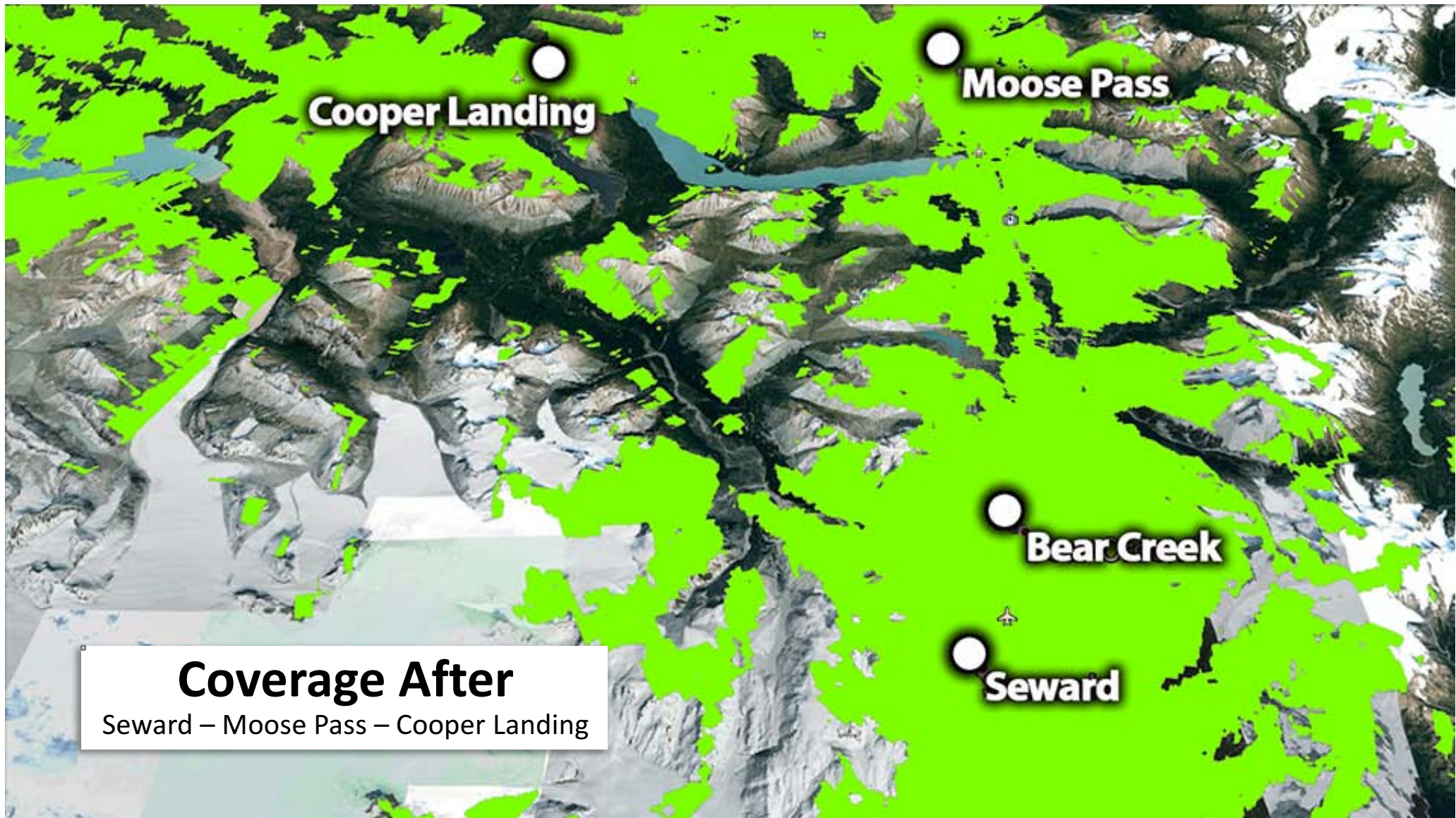




## Coverage Before

Seward – Moose Pass – Cooper Landing





**Cooper Landing**

**Moose Pass**

**Bear Creek**

**Seward**

**Coverage After**

Seward - Moose Pass - Cooper Landing



## 4G/LTE “STEALTH TOWER” AT KINCAID PARK





The background of the advertisement is a scenic view of a city, likely Anchorage, Alaska, with a wide river in the foreground and mountains in the background. Overlaid on this scene is a digital graphic of binary code (0s and 1s) that appears to be streaming or flowing upwards from the city towards the top of the frame. The text is integrated into this digital theme with colored banners.

**INTERNET**

READY. SET.

**GIG.**

*| Get Alaska's fastest internet. |*



READY. SET.

GIG.







**76%**

of Alaskans have access  
to 1 gigabit broadband.



**13.9%**

of Texans have access  
to 1 gigabit broadband.



## Our Commitment to an Open Internet

As a provider of internet services in Alaska for decades, GCI has always been committed to an open internet that gives our customers the freedom to be in charge of their online experience. An open internet means that we do not block, prevent or otherwise impair our customers' freedom to direct their own online activity. This is a commitment that we stand by unequivocally. And that will not change.





**TERRA**





# TERRA BY THE NUMBERS

- More than 100 towers
- Over 3,000 miles of microwave and fiber
- \$300+ million investment
- Provides access to 45,000 Alaskans
- 84 communities in western Alaska





# HOW LONG IS THE TERRA NETWORK?

**3,289** MILES

Further than Seattle to Miami



## HOW LONG WOULD IT TAKE YOU TO TRAVEL THAT FAR?



**44 Days Nonstop**

*Average speed is 3.1 mph*



**11 Days Nonstop**

*Average speed is 12 mph*



**4.5 Days Nonstop**

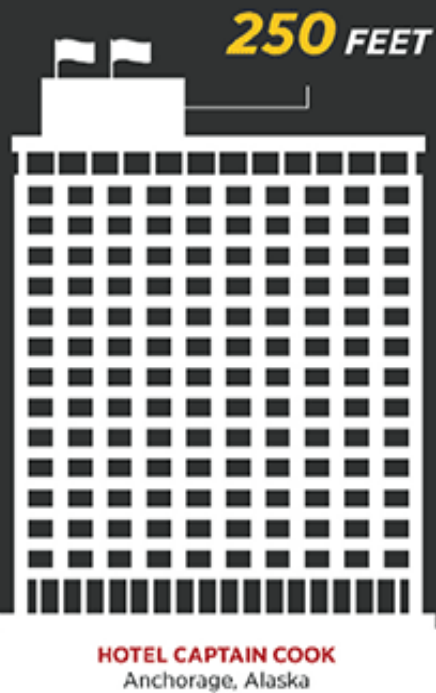
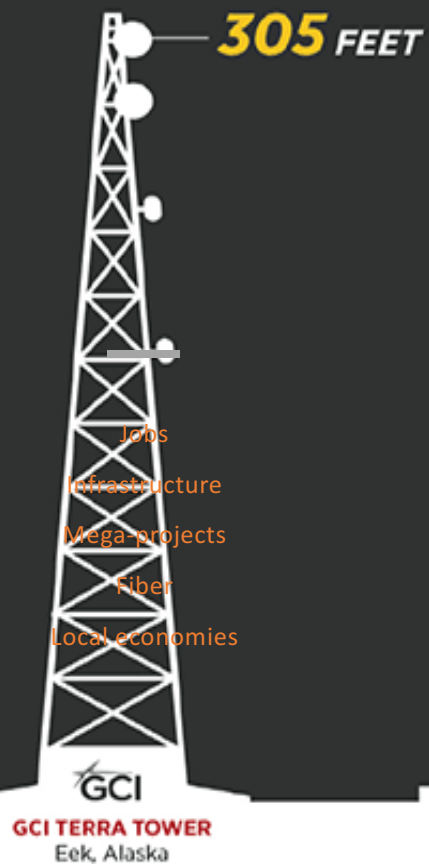
*Average speed is 30 mph*



**25 Hours Nonstop**

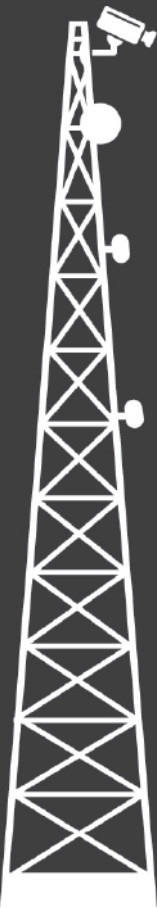
*Average speed is 130 mph*

# HOW TALL IS A TERRA TOWER?





# TERRA MAKES ALASKA SKIES SAFER



**960**

The number of FAA weather cameras located throughout Alaska, many on TERRA towers and GCI facilities.



**85%** reduction in weather-related aviation incidents.



**66%** reduction in how often pilots must turn around due to weather.

## NORTH SLOPE INVESTMENT

- \$44 million redundant fiber project
- 240 miles
- The only protected, physically diverse, redundant fiber to the North Slope.
- Complements our extensive fiber, microwave & wireless infrastructure.





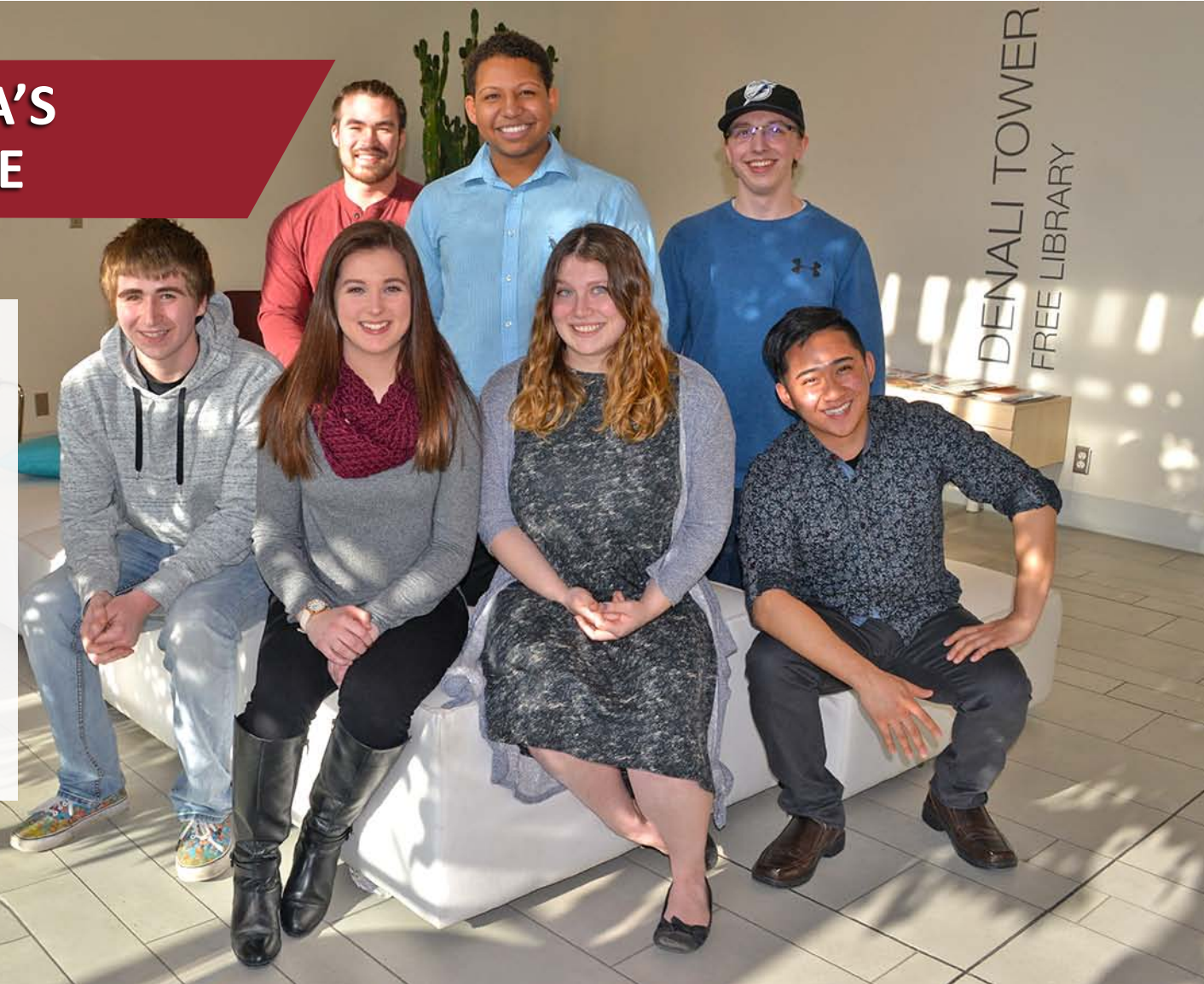
# ALASKA TOUGH





# GROWING ALASKA'S TECH WORKFORCE

- Extends through graduate school, military and technical programs
- Started in 2014
- 40+ individuals participated





A photograph of a group of graduates in black gowns and caps. In the center, a woman with glasses and a red stole is smiling. Other graduates are visible around her, some looking down at papers. The background is slightly blurred, focusing attention on the central figure.

## SCHOLARSHIPS

GCI has provided more than \$6 million over the past 20 years for college scholarships



# VOLUNTEERING IN OUR COMMUNITIES

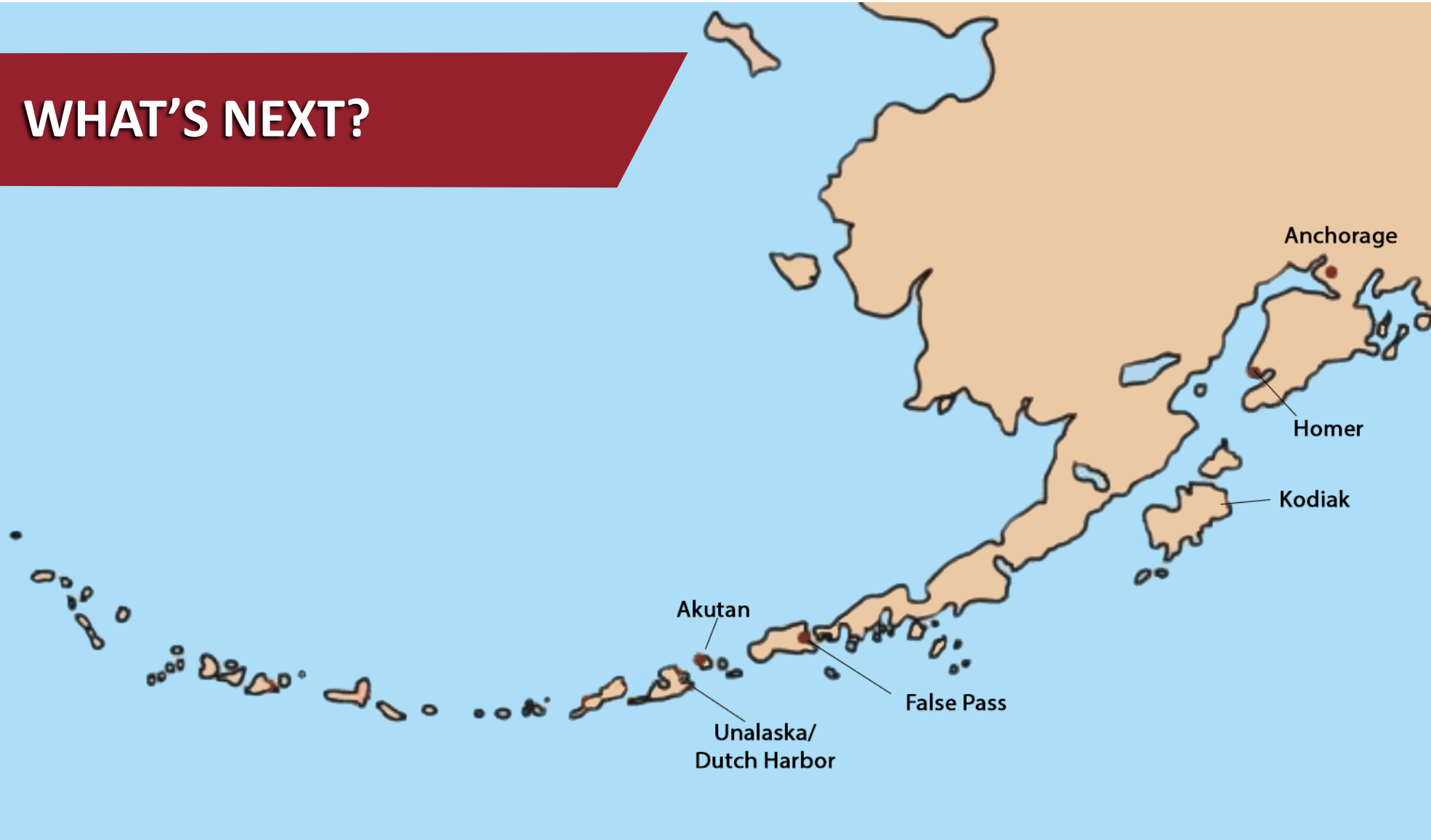




# ALASKA BORN AND RAISED

[www.gci.com/gci-gives](http://www.gci.com/gci-gives)

# WHAT'S NEXT?







Alaska Born and Raised

