



Alaska Resource Education

Resource Development Council

February 1, 2024

Resource Race



Mission

Educate students about Alaska's natural resources.

Vision

Empower students to be informed stewards of Alaska's natural resources.

Values

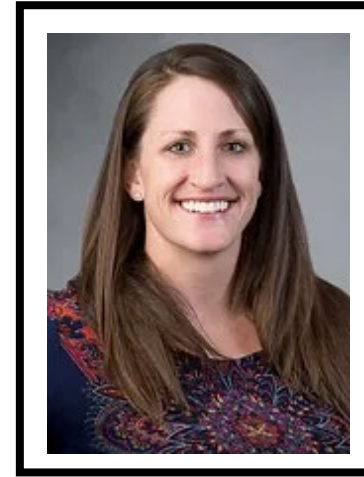
- Innovation
- Collaboration
- Flexibility
- Fun





Ella Ede
Executive Director

ARE CORE TEAM



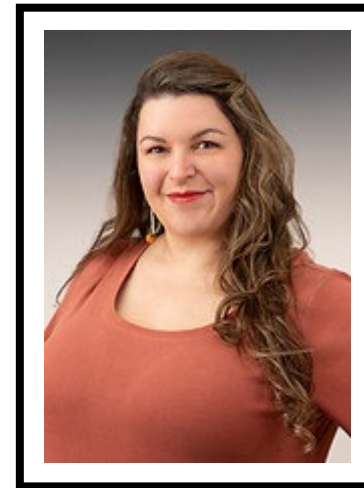
Beki Toussaint
Program Director



Taylor Burgh
Operations Manager



Brant Hylinski
STEM Educator



Naomi Mitchell
Interior Program Coordinator

ARE BOARD OF DIRECTORS

Executive Committee



**Clayton Gooden,
Chair
NANA Regional Corp.**



**Banner Romenesko,
Vice Chair
Santos**



**Elena Romerdahl,
Secretary
Perkins Coie**



**Logan Birch,
Treasurer
McKinley Capital
Management, LLC**



**Terry Aldridge,
Crowley**



**Lisa Cassino,
Usibelli Coal Mine**



**Jessica Croffut,
Matson**



**Mike Driscoll,
ConocoPhillips**



**Corri Feige,
Terra Piniun, LLC**



**Scott Habberstad,
Alaska Airlines**



**Dave Hoeffel,
Frontier Supply**



**Dave Karp,
Saltchuk**



**Heather Nelson,
Hecla Mining**



**Judy Patrick,
Judy Patrick
Photography**



**Casey Sullivan,
Marathon
Petroleum**



**Pete Stokes,
Petrotechnical
Resources Alaska**



**Jerry Webre,
Little Red Services**



A.R.E.

Spark. Ignite. Launch.

// EDUCATING ALASKA'S STUDENTS FOR OVER FOUR DECADES

Spark



*Spark interest in
learning about natural
resources*

Ignite



*Ignite passion for
understanding
connections to natural
resources*

Launch



*Launch into the next
phase with the
knowledge to make
informed decisions*

HOW WE TEACH K-12 STEM EDUCATION



ROCKS & MINERALS



ENERGY



FORESTRY

CLASSROOM VISITS

Guest teaching in schools across AK in person and on Zoom

SUMMER CAMPS

Taking students to see natural resource sites and learn about associated careers first-hand

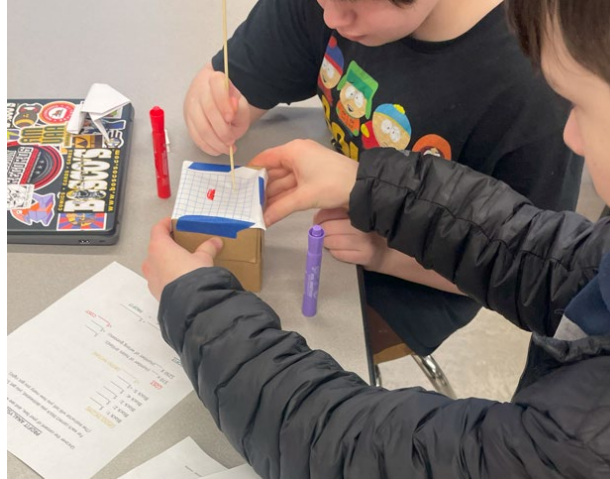
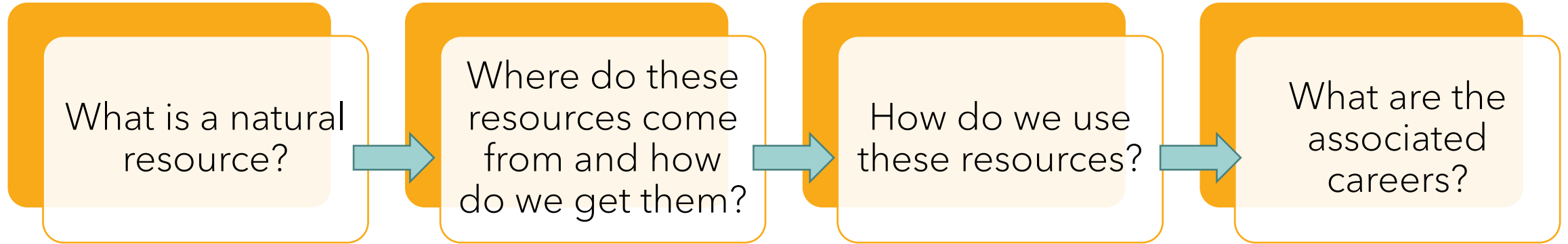
YOUTH PROGRAMS

Deeper explorations in after school programs, STEM nights, & camps

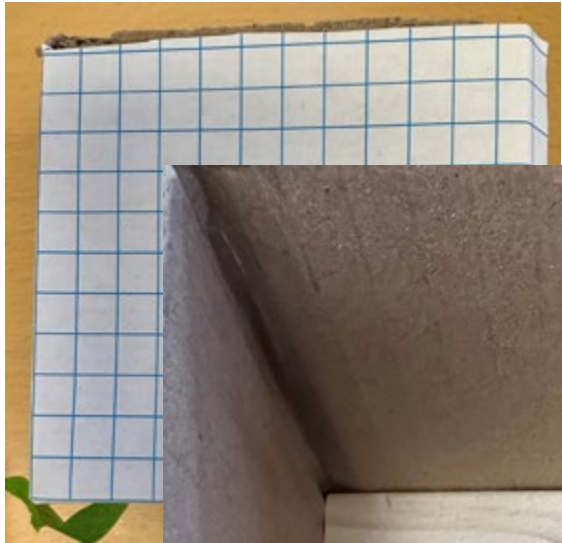
TEACHER TRAININGS

Educating teachers about our resources and how to implement them in the classroom

CURRICULUM FLOW



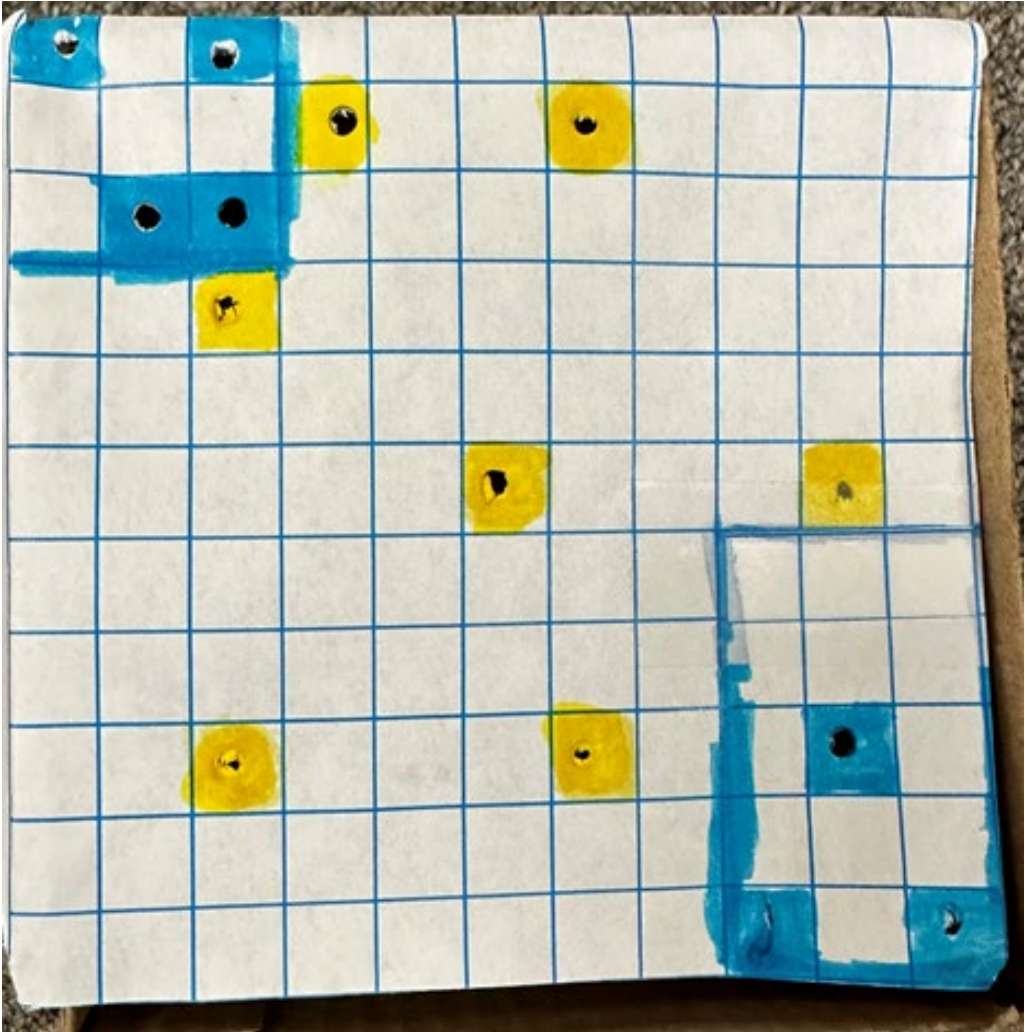
WHAT'S UNDERGROUND



HIT



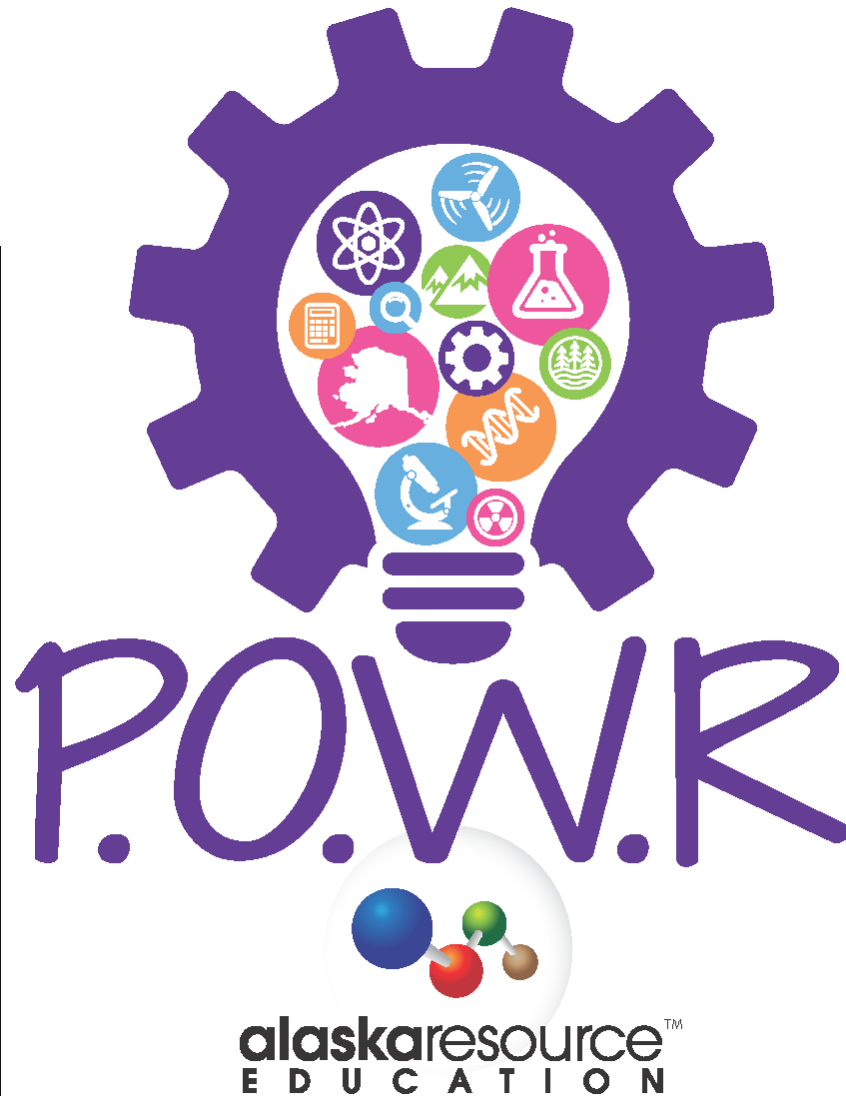
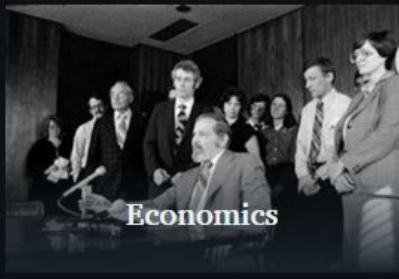
MISS



Project Based Learning and Workforce Development Opportunities



Our Alaska



*Powerful Opportunities
for Women in Resources*

ARE Rockstars



People think sustainable resource development is...

THIS



NOT THAT



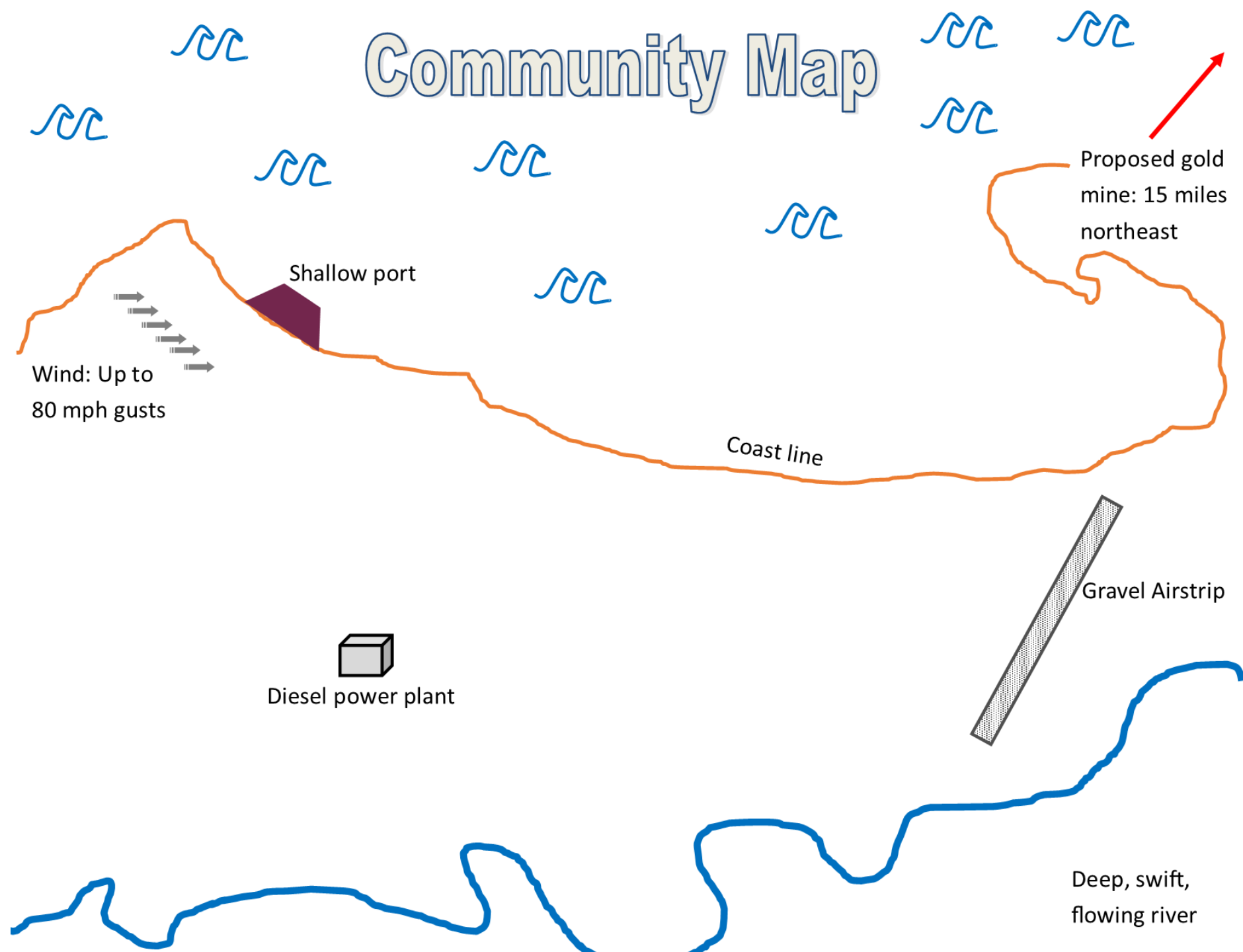
At ARE, we tell a different story

We must look at the whole picture



Community Connections

- Population: 400
- Northwest Alaska
- Coastal access
- Salmon-populated river
- No road access



Transportation



Paved airstrip



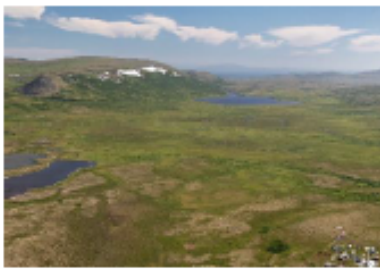
Deep water port

Neither

Resource Development



Mine



No Mine

Energy



Expand diesel



Solar



Wind



Hydro

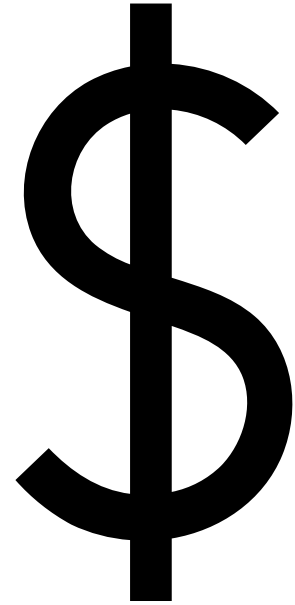
How will your decisions
impact...



People

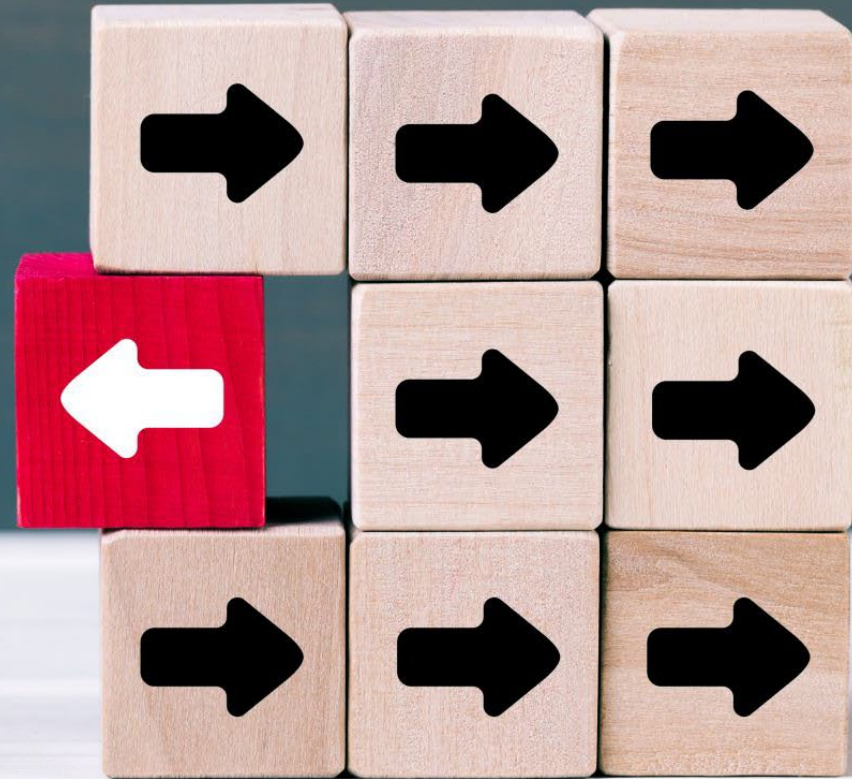


Planet



Profit

There are
NO right or
wrong
answers.



Challenging the system

ENERGY: SOLAR

* PRO/CON?

Solar is a renewable resource, meaning we can get it again and again.

* PRO/CON?

Your community experiences 1,800 of sunlight per year, and the average daylight exceeds 12 hours per day from April-September.

* PRO/CON?

In winter, your community faces long periods of darkness. At winter solstice, the sun rises at 12pm and sets again at 2pm.

* PRO/CON?

Due to being on the coast, you experience bad storms throughout the year.

* PRO/CON?

There is no fuel that is burned when using a solar panel for electricity production.

* PRO/CON?

Solar is considered an intermittent resource, which means it is not always sunny

* PRO/CON?

Solar panels require mined materials to be manufactured.

* PRO/CON?

Solar panels can be expensive up front, but overtime using solar would reduce the cost of electricity for the community.

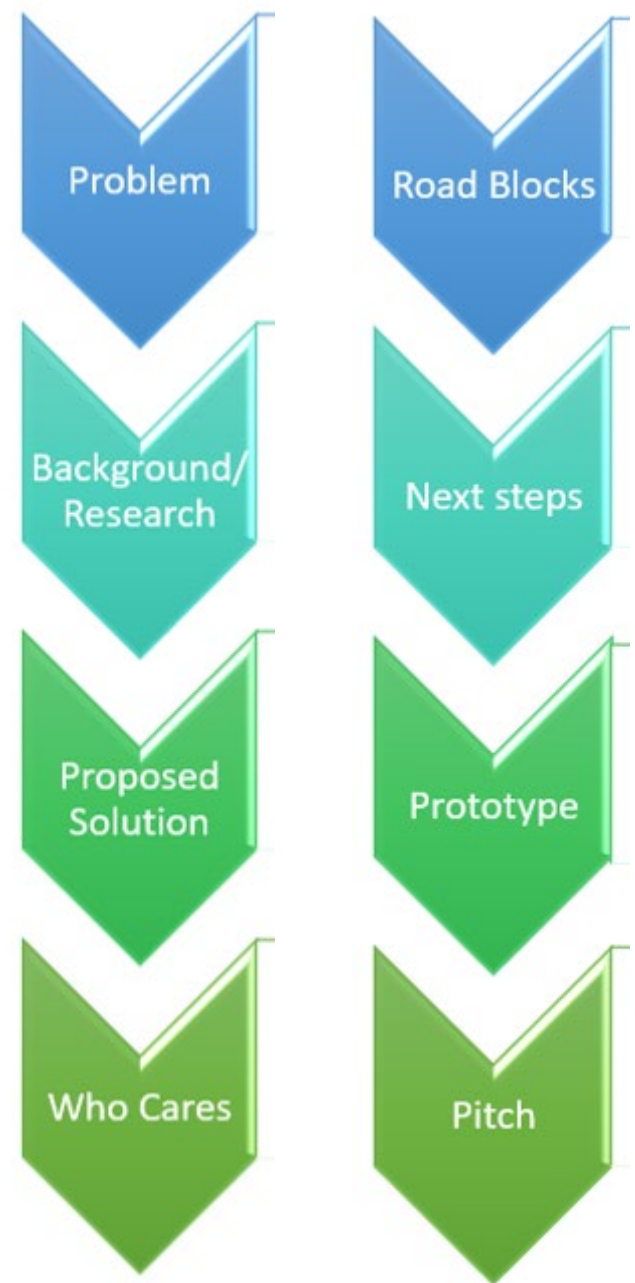
* PRO/CON?

The solar panels might require periodic maintenance, which no one currently in your community knows how to to.

Solar car races



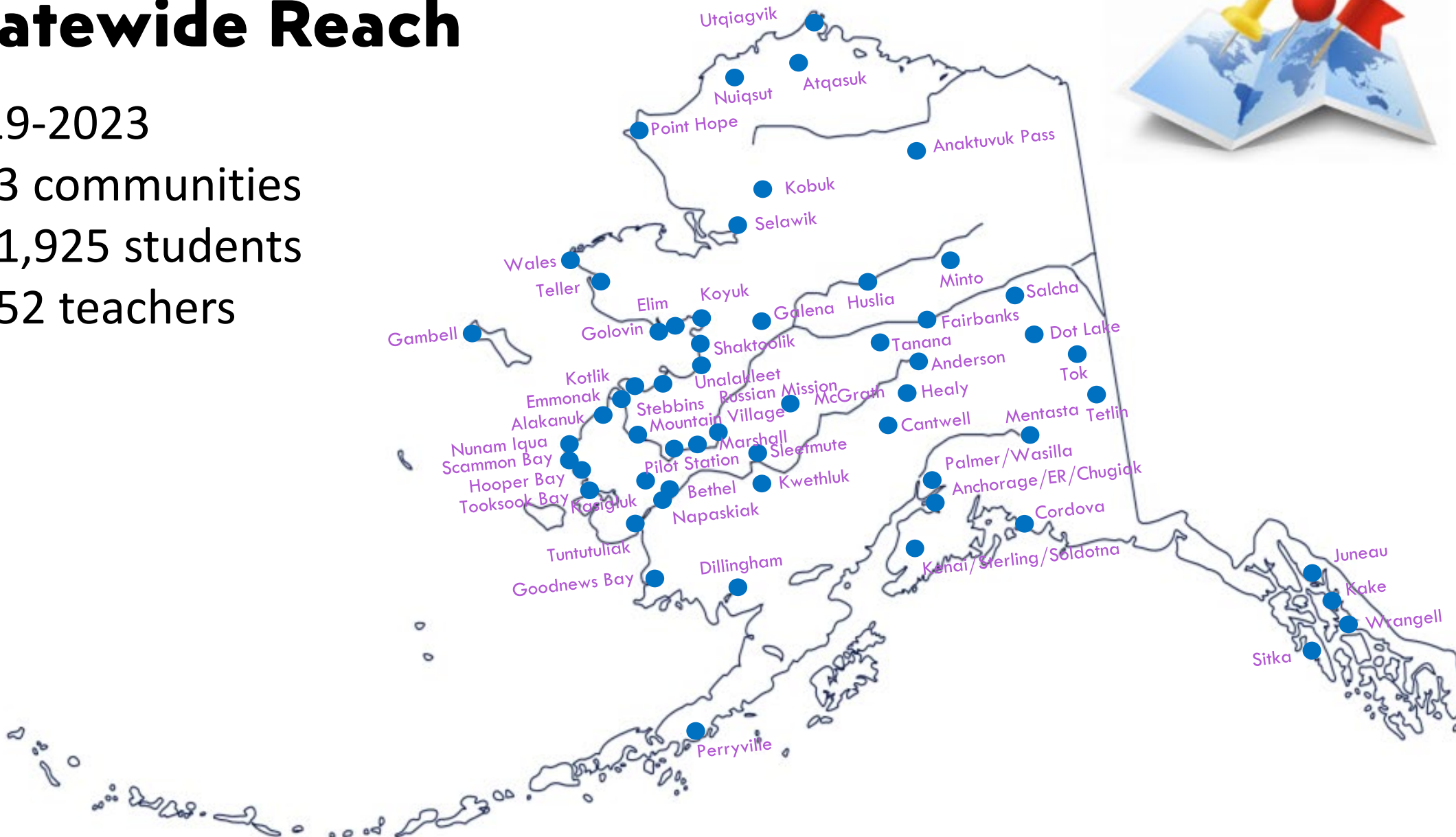
Sustainable Design Challenge

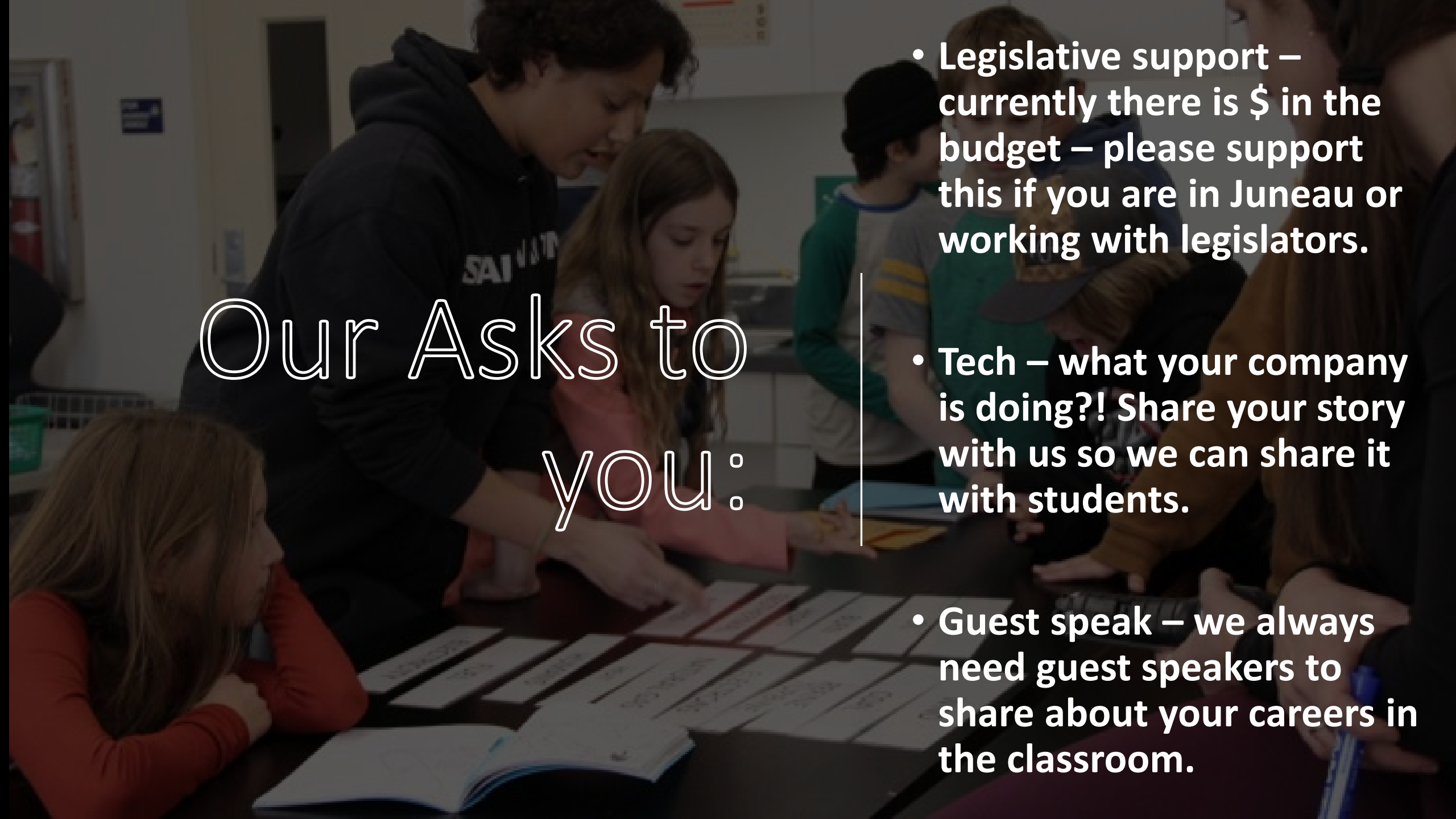


Statewide Reach

2019-2023

- 53 communities
- 41,925 students
- 452 teachers



A group of students are gathered around a table in a classroom, working on a project. They are looking at papers and cards laid out on the table. One student is pointing at a card. The background shows other students and classroom elements like a fire extinguisher and a poster.

Our Asks to you:

- **Legislative support** – currently there is \$ in the budget – please support this if you are in Juneau or working with legislators.
- **Tech** – what your company is doing?! Share your story with us so we can share it with students.
- **Guest speak** – we always need guest speakers to share about your careers in the classroom.



Thank you!
www.akresource.org



Ella Ede
Executive Director
eede@akresource.org

Beki Toussaint
Program Director
btoussaint@akresource.org

